

Spare Parts Catalogue

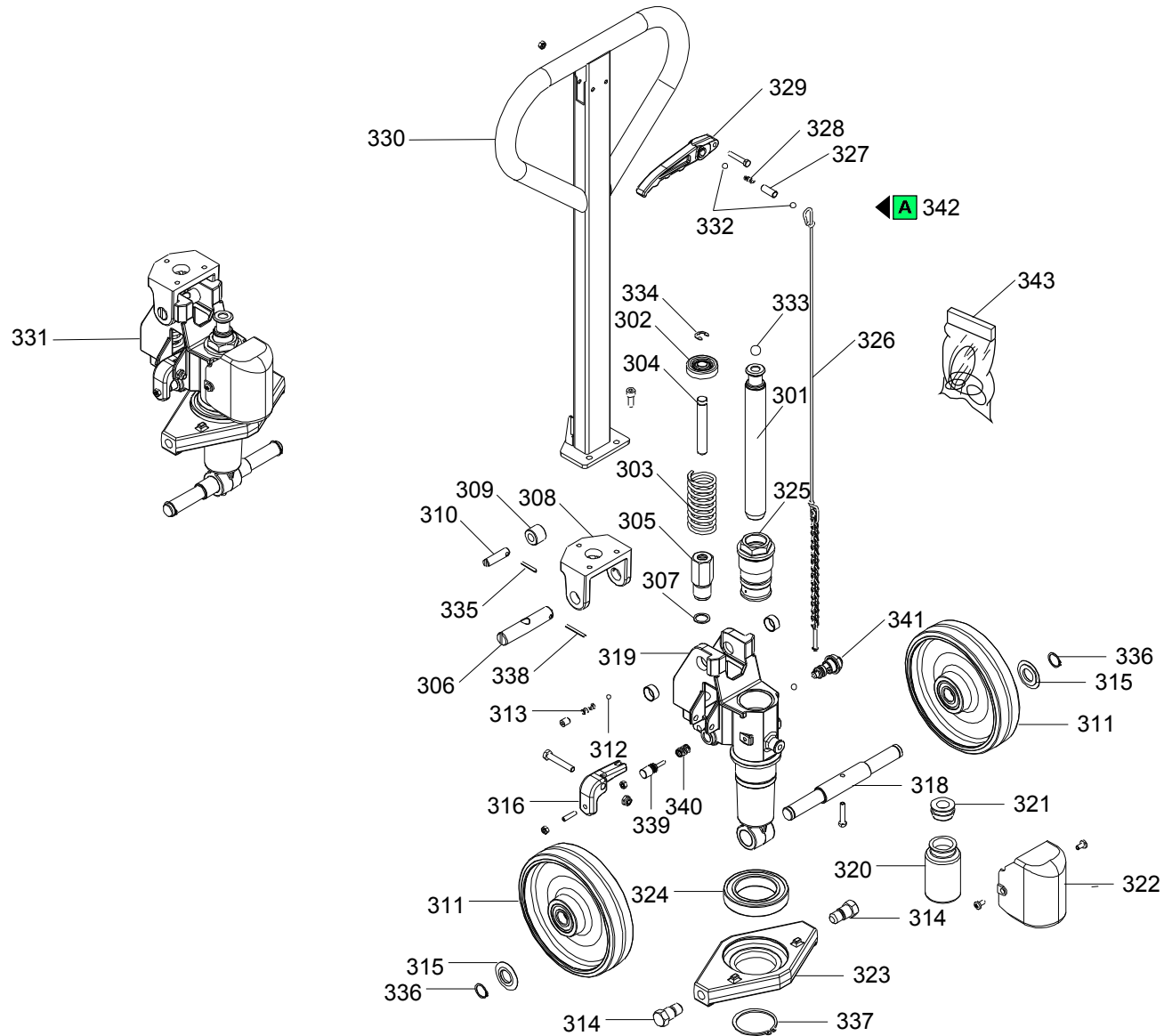
GS BASIC-22S4-1150X525

Handling systems | Hand pallet trucks

Valid for machine code: GAD410RB000

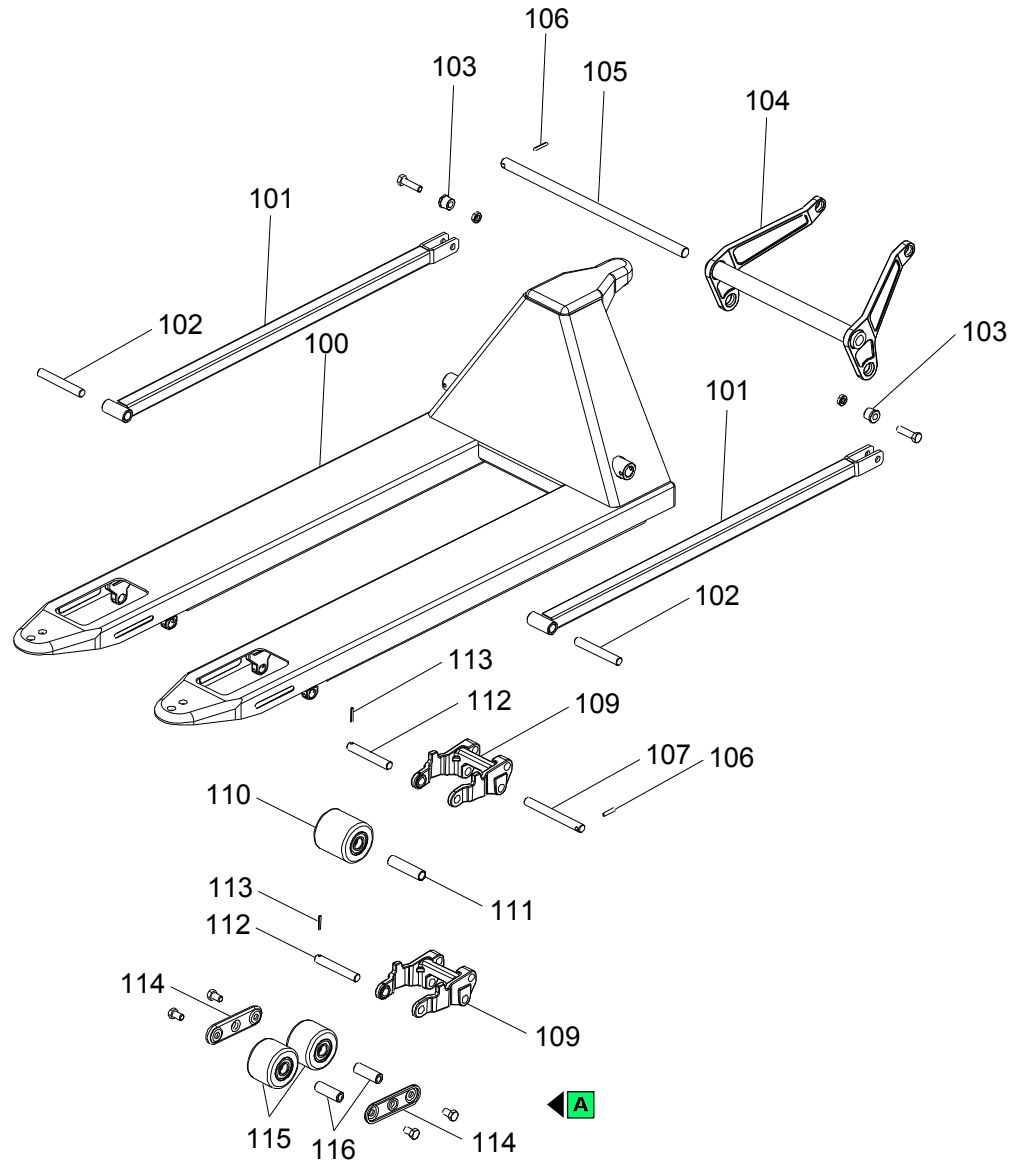
Revision: 0 (7/2008)

Copyright 2016 Pramac Group, All Rights Reserved.



Position	Part Number	Description	Notes
301	S00003502	Piston Gs/global (machined)	-
302	G09007	Spring Slide Cup Gs/usa '99 Lam.zn	-
303	G001103	Spring De42 F.4,5x125 P.15 Grinded-zinc Plated	-
304	S0004013006	Plunger Pump Gs	-
305	S0004010470	Burnished Cylinder Gs-gs/galv Assembled	-
306	S0004013008	Chain Guide Pin (l.98) Burnished	-
307	G096001	Copper Washer 18x23,5x1,5	-
308	S0004011012	Cast Iron Bridge Gs	-
309	S0004013001	Pump-up Roller Tp/gs Burnished	-
310	S0004013002	Pump-up Roller Pin Gs	-
311	S000007036	Wheel Injected Polyurethane/nylon Black Color D200x45+bearings '07 Gs	-
	S0002010169	Ruota Gomma D200 (model No. Ea200bh-65a Lifter) +cuscinetti	-
	S0004010186	Nylon Wheel D200 With Bearings	-
	S0014010233	Polyurethane Wheel /all D200x50 Lag + Bearings 6204	-
312	G016116	Ball 7/32" (mm5,556)	-
313	G001104	Spring De8 F.1,7x22 P.3,5 Grinded	-
314	S0004015007	Cross Screw Zinc Plated Gs	-
315	G091101	Wheel Dustguard Tp 47x20 Sp3.9 Tellure	-
316	S000003901	Opening Spill Pedal '07 Gs	-
317	S0004018002	Body Pump Bushing Gs (20x22x10)	-
318	S0004015015	Wheel Axle Gs/hl10e	-
319	P0PP00006	Body Pump Gs'02 (spare Part)	-
320	S0004018003	Oil Tank Pallet Truck Gs	-
321	S0004018001	Oil Tank Cap Pallet Truck Gs	-
322	S0004018005	Tank Protection Gs (short)	-
323	S0014011030	Cross Gs/cat	-
324	G010220	Bearing 6012 Rs(60-95-18)	-
325	S0004011024	Cast Iron Bushing Gs (machined)	-
326	P0TT00001	Complete Tie-rod With Handle Lever Gs (ø3.3	-
327	S0004036022	Lowering Lever Spacer Gs	-
328	G001126	Lowering Lever Spring Gs	-
329	S0004018006	Lowering Lever Pallet Truck Gs	-
330	S0004030215	Pump Handle Gs (painted)	-
331	S000007035	Hydraulic Assembly Gs Basic '07 22q.li.+ Poly I./nylon Black D200x45 Wheels	-
332	G016104	Ball 5/16" (mm7,938)	-
333	G016103	Ball 9/16" (mm14,288) Ball 2	-
334	G042501	Locker Ring Rs 7434 D10	-

Position	Part Number	Description	Notes
335	G044319	Elastic Peg Spirol 8748 D4x30	-
336	G042120	Outer Seeger 7435 E 20	-
337	G042160	Outer Seeger 7435 E 60	-
338	G044318	Elastic Peg Spirol 8748 D 4x40	-
339	P3VA00001	Slot Pin Gs '02 Complete (spare Part)	-
340	G001102	Pedal Return Spring	-
341	S0004010036	Complete No Return Valve Gs (spare Part)	-
342	S0004030243	Pump Handle Gs Basic '08	-
343	P0KI00003	Gasket Set Gs '02	-



Position	Part Number	Description	Notes
100	V0001010208-PRAMAC	Frame Gs 1150x525 Painted Green Pramac	-
101	S0002270525	Push Rod Gs'01 L=1150 25q Painted	-
102	S0002205038	Pin D16x113 Gs	-
103	S0003005055	Push Rod Internalfork Bushing Ck Zinc	-
104	V000003039-9005	Painted Rocker Arm Gs 12 L=525	-
105	S0003015038	Rocker Arm Axle Gs 520	-
106	G044304	Elastic Peg 6873 D 6x32	-
107	S0002205040	Reference Pin Gs	-
108	G056104	Exit Nylon Roller D38 Gs	-
109	S0002201027	Double Clevis Gs (machined)	-
110	P0RU00003	Nylon Roller Black Gs Basic S2 '08 D82x82+ Bearings	-
	S0002010131	Nylon Roller D82x82 + Bearing	-
	S0002010178	Injected Polyurethane Roller D82x82 + Bearing	-
111	S0002206023	Single Roller Spacer Gs	-
112	S0002205039	Tandem Connection Pin Gs	-
113	G044319	Elastic Peg Spirol 8748 D4x30	-
114	S000003005	Rocker Tandem Gs'01 Zinc Plated	-
115	P0RU00004	Nylon Roller Black Gs Basic S4 '08 D82x60+ Bearings	-
	S0002010132	Nylon Roller D82x60 + Bearing	-
	S0012050170	Injected Polyurethane Roller D82x60 + Bearings	-
116	S0012035029	Tandem Roller Spacer Gs	-
117	P0P900003	Black Nylon Rollers Complete Tandem D82x60 Gs Basic '08	-
	S0012030178	Complete Rollers Tandem Injected Polyurethane Gs	-